

Fall / Winter 2018



# Voice of the Wapack

Published by the Friends of the Wapack, Inc.

Issue #102

## Welcome to the Frank Robbins Trail



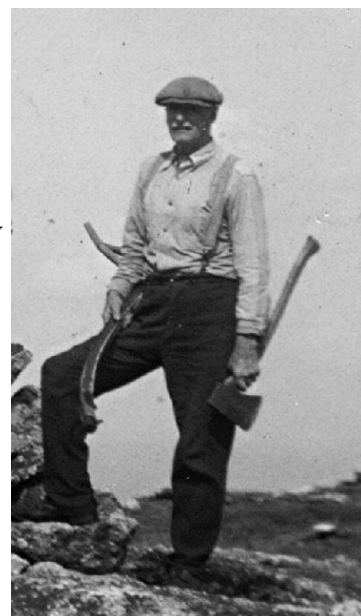
It's always exciting when we can add a new trail to the Wapack Trail system. This year we partnered with Northeast Wilderness Trust to open a new trail for foot travel on their Binney Hill Preserve in New Ipswich. The new trail is named in honor of Frank Robbins, who, along with Marion

Davis, founded the Wapack Trail in 1923. We already named a trail for Marion Davis on Pack Monadnock in 1985. We are very happy to now have the opportunity to honor Frank Robbins with his own trail as well.

The Frank Robbins Trail connects to the Wapack Trail at two locations (see map) and provides an alternative route through the preserve, avoiding the large clearing from timber harvests by the previous

owner. The trail is approximately one mile long,

*(Continued on page 6)*



*Frank Robbins on the Wapack Trail Sept. 26, 1934*

## Wapack News

In our Spring newsletter we included an announcement of our 2018 Wapack Trail Protection Fund Appeal. The goal of this appeal is to begin to replenish our funds after our donation last year of \$25,000 to the Northeast Wilderness Trust Binney Hill project. This successful project resulted in permanent protection of about 1 mile of the Wapack Trail in New Ipswich, and the creation of the Binney Hill Preserve, a 488 acre forever wild preserve.

Since May 1, we have received about \$3,000 in donations attributable to our appeal. Thank you to

everyone who has donated thus far! There are still miles of the trail to protect. So please consider an end of year donation to Friends of the Wapack so we can continue to work toward our goal of permanent legal access for hikers to the entire length of the Wapack Trail. You can donate on line at [wapack.org](http://wapack.org), or via check mailed to our address listed on page 2.

It's been an exciting year so far, with the opening of the Frank Robbins Trail, our new FOW apparel store (great for holiday presents!), the installation

*(Continued on page 5)*

## Friends of the Wapack



The *Voice of the Wapack* is published twice a year by the Friends of the Wapack, Inc. The Friends are nonprofit volunteers dedicated to the

maintenance and preservation of the Wapack Trail System. Financial support is provided by member donations which are tax deductible to the extent allowed by law. The Wapack Trail is a 21-mile skyline footpath from Mt. Watatic in Ashburnham, MA to North Pack in Greenfield, NH. Completed in 1923, it is the oldest interstate hiking trail in the Northeast.

The Friends of the Wapack, Inc. is recognized as a charitable corporation under Section 501(c)(3) of the US IRS code.

Copyright © 2018 Friends of the Wapack, Inc.

Friends of the Wapack

P.O. Box 115

West Peterborough, NH 03468

Web: [www.wapack.org](http://www.wapack.org)

Email: [info@wapack.org](mailto:info@wapack.org)

*Once it's gone, It's gone forever*

### Officers:

Rick Blanchette, *President*, (603)878-1464

Dwight Horan, *V. President*, (603)878-3779

Lee Baker, *Secretary*, (603)525-5262

Bruce Myrick, *Treasurer*, (603)352-8616

### Standing Committee Chairs:

Lee Baker, *Trips*, (603)525-5262

Rick Blanchette, *Trails, Newsletter*, (603)878-1464

Mitch Call, *Ways & Means*, (603)924-7544

Mike Przybyla, *Management / Right-of-Way*, (603)878-3350

### Directors:

Tom Brumaghim, (603)878-6167

Ray Jackson, (978)597-8813

Bob Saari, (603) 913-7265

Sherisa Sterling (978) 827-3272

**Archivist:** Jeannette Baker

**Trail Master:** Mike Przybyla

**Web Master:** Jon McNerney

## 2018 Trail Workday Reports



The first workday of 2018 was held on **May 5th** at Temple Mountain. We had a good turnout, with eleven volunteers participating. We began the day by installing new signs provided by the State. Two were placed at the bottom of the mountain

along the access road. The third sign was installed at the summit where the trail leaves the access road. While the signs at the bottom went in easily, we had to deal with ledge at the summit and after numerous failed attempts we were finally able to dig a deep enough hole to support the sign.

After lunch at the stone chair ledge, we continued on to the north slope of Holt Peak where we rehabilitated two water bars we had installed a number of years back.

The second workday, on **June 2**, was a special event to celebrate National Trails Day and to finally have a trail named after Frank Robbins, who with Marion Davis, laid out and cut the Wapack Trail. We cut a new loop trail on the Binney Hill Preserve.

The trail follows skidder trails on the southwest corner of the Preserve and provides an interesting loop for hikers coming in from Mt. Watatic.



The crew who opened the Frank Robbins Trail

On **September 22rd** we had a veteran crew of 9 doing drainage work on the Marion Davis Trail. We refurbished two rock water bars that we had made 25 years ago, added a new water bar and a long trench to divert run off, and cleaned out existing trenches.



This workday was led by Tom Brumaghim (thanks Tom!) Thanks to all who participated in our workdays so far this year!

-Mike Przybyla, Trail Master





# The Friends of the Wapack

*invite you to our*

## 2018 Annual Meeting

Saturday, October 20

***Sharon Meeting House, Rte. 123, Sharon, NH***

***Featured Guest Speaker: Paul Willis***

***“Game Camera Captures at Binney Hill”***



Paul Willis lives in the shadow of the Wapack Trail. From the time Paul, and wife, Vicki moved to their New Ipswich home 23 years ago, there has been a path from their house to the Trail - which has gotten lots of use. Paul and Vicki have been volunteer monitors of the Wapack Wilderness since the easement was purchased by Northeast Wilderness Trust. Retired from a career in the Newspaper industry, Paul has been monitoring game cameras on the Binney Hill Preserve for two years.

Paul's presentation will feature photos and videos captured on these game cameras, showing a surprisingly large variety of wildlife including moose and bear, and even the occasional human. He will also talk about what he has learned about game cameras and their optimal placement in the process.

Shelby Perry, Stewardship Director of Northeast Wilderness Trust, will also join us for a brief presentation on NWT and their conservation properties along the Wapack Trail. Shelby will update us on what has been happening on the Binney Hill Preserve since it's conservation as forever-wild in 2016 and on the Trust's future plans for the preserve. She will also share some photos and history of the wilderness easement that they hold to the north of the Binney Hill Preserve, known as the Wapack Wilderness. This special property was conserved in two phases, in 2007 and 2008, and so is celebrating its 10th year as wilderness this year!

Please join us for our 2018 Annual Meeting and enjoy an informative and entertaining presentation. We hope to see you there! Everyone is welcome!

**9:00AM Hike (optional). Frank Robbins Trail, New Ipswich.** Join us on a morning hike on the new Frank Robbins Trail, at the Binney Hill Preserve. Meet at 9:00 AM at the NewWest Mall on Routes 123/124 in New Ipswich, NH. We will car pool from there to Binney Hill Rd. where there is limited parking. For details contact Lee Baker (603) 525-5262 or email Lee at [snowman3137@gmail.com](mailto:snowman3137@gmail.com).

**Noon** Informal “bring-your-own” lunch at Sharon Meeting House. The *Friends* will provide beverages and light desserts. *Bring a dessert to share if you like.*

**1:00PM** Speakers **Paul Willis and Shelby Perry**, followed by Friends of the Wapack business meeting with highlights from this year and election of officers.

***Yes, there will be  
door prizes!***

### ***Directions to Sharon Meeting House:***

**From the East:** Rt. 101 to blinking light for Rt. 123 South in Peterborough; left at 123, 3.7 miles to Sharon Meeting House, on left, a bit north and across the road from Sharon Arts Center, and behind the old Sharon brick school house.

**From the West:** Rt. 101 through traffic light in Peterborough; east to blinking light for Rt. 123 South; right onto Rt. 123 South (Elm Hill Rd.) 3.7 miles to Sharon Meeting House, on left.

**From 202 North:** Rt. 202 South to Peterborough; left at stop sign onto Rt. 101 East; east to blinking light for Rt. 123 South; proceed as above.

# Friends of the Wapack Upcoming Events

All are welcome to attend the following meetings & events  
Check our website for updates and additions [www.wapack.org](http://www.wapack.org)

## **Board Meetings**

First Thursday of alternate months unless otherwise noted. (November 1, Jan 3, Mar 7, May 2). All are welcome. Shieling State Forest Barn in Peterborough, NH, or Ashby Public Library, Ashby MA.. 7:00 PM. Check with a board member to confirm date and location.

## **Trail Work Days**

### ***Saturday October 27th - Miller State Park***

The final workday will be on Saturday October 27. Once again we will be at Miller State Park, this time doing stone work on the lower section of the Wapack just above the spot where it crosses the access road. This is a very rocky section and we will be moving rocks around to improve the tread way. We plan to be working with the Trailwrights on this project which will provide a useful experience for anyone interested rock construction. We will be using a Griphoist and other rigging, so heavy gloves and shoes are especially important. Pack a lunch and bring plenty of water. We will meet at 8:30 AM at the Miller State Park lower parking lot.

Contact Mike Przybyla for more information or questions 603-878-3350. Please check our website for updates [www.wapack.org](http://www.wapack.org). Thank you!

## **Annual Meeting**

### ***Saturday, October 20 - 1:00 PM - Town Meeting House, Sharon, NH***

See the Annual Meeting notice in this issue for details. Check our website for updates and details. [www.wapack.org](http://www.wapack.org).

## **Hikes**

### ***Saturday, October 20 - 9:00 AM Annual Meeting day Morning Hike!***

See the Annual Meeting notice in this issue for details.

***Sign up for email notices of future Friends of the Wapack events at [Wapack.org](http://Wapack.org)!***

## **On the Lighter Side by Lee Baker**

<b>PRESIDENT</b>	<b>VICE PRESIDENT</b>	<b>TREASURER</b>	<b>SECRETARY</b>
Rick Blanchette	Dwight Horan	Bruce Myrick	Lee Baker

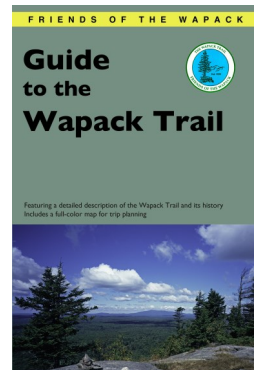
Do I hear any other names to put into nomination for board chairmen for the coming year. Hearing none, Lee will you present these names to be voted on at the Annual Meeting? Yes Rick, I will do that.

Uhmmm! Where are the cookies?

LB'18

## **General Store**

Visit our website [Wapack.org](http://Wapack.org) to order our Guide to the Wapack Trail, Trail Map, our cap, patch or sticker. Use PayPal or print the form and order via mail. Thanks for your support!



## New: FOW Apparel Sales Support the Wapack Trail

For many years people have asked us to offer t-shirts with our logo. "Every other trail organization has a shirt, why not you?". So now, in addition to our on line General Store, we also offer Friends of the Wapack logo clothing through an arrangement with Northeast Promotion and Apparel (NEPA). These offerings are available from NEPA at the new Friends of the Wapack online store on NEPA's secure website. The site can be reached from our website, wapack.org, by clicking on the "Store" link at the top of the page, and selecting "Apparel Store" from the drop down menu. Note that this is a separate web site from the Friends of the Wapack General Store, with a separate checkout and order process. Profits from all sales are sent to the Friends of the Wapack and added to our funds for trail protection and maintenance.

We chose NEPA for this service because their process does not require us to maintain any inventory, provides a broad choice of quality apparel and colors, and our logo is embroidered on to the fabric. The site currently offers cotton and performance t-shirts, both short and long sleeve in many colors for women, men, and children. It also offers cotton polo shirts with color choices for women and men. Check the site again as we will likely add additional items to the store later this year.



Sample Men's T



Sample Women's Polo



Sample Women's T

## Wapack News (continued)

of new trail signs at Temple Mountain State Reservation and the good response so far to our fund raising appeal.

As always, we've been busy with trail maintenance, including removing 7 down trees along the ridge "between the Packs".

"Get Involved!" is our new initiative to reach new people who would like to help. One of the best parts of trail work is meeting people on the trail. If they are interested in helping out, we'll give them our new "Get Involved" folding card, with the text you see on the right.

Please see our Annual Meeting notice in this issue, and consider joining us for what is always an interesting and fun informal gathering. We hope to see you there!

- Rick Blanchette, President

## Notices

### Winter use of the Wapack Trail through Windblown Cross-Country Ski Area

1. With snow on the ground everyone using the Wapack Trail through Windblown property needs to pay for a trail ticket.
2. Everyone must use skis or snowshoes, no hiking.
3. In winter with a trail ticket you can use the Windblown parking lot during the day, not overnight.
4. Dogs are not permitted.
5. Check the Windblown website to see if they are open or stop into the ski shop between 9 and 5. If not open no trail fee.
6. Snowshoers need to stay out of the ski tracks.
7. People coming from south to north and not leaving a car in the lot can pay on their way out. Thank you!

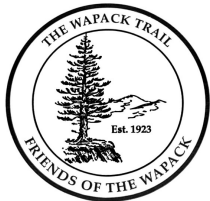
### Voice of the Wapack newsletter on line

If you would rather read this newsletter on line, please sign up for our email Newsletter at Wapack.org. Rather than receiving the paper newsletter you will receive our e-Newsletter via email with a link to the full version.

*If your email address has changed please send us a note from your new address to [info@wapack.org](mailto:info@wapack.org)*

## Get Involved!

Attend a workday  
Adopt a trail section  
Report trail conditions  
Donate to help us secure permanent protection for the Wapack Trail  
*Details at [wapack.org](http://wapack.org)*



Friends of the Wapack, Inc.  
P.O. Box 115  
West Peterborough, NH 03468  
Info@wapack.org  
www.wapack.org



Find us on Facebook

**Annual Meeting  
Notice enclosed!!**

Printed on Recycled Paper



## Frank Robbins Trail (continued)

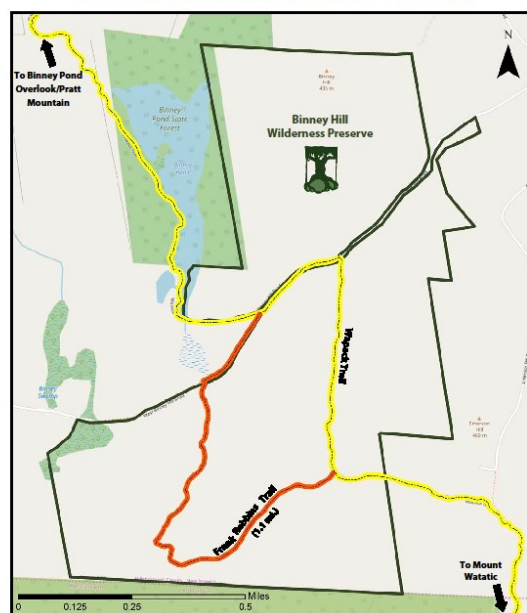


*Frank Robbins, cofounder of the  
Wapack Trail*

and blazed with a white stripe. It provides a moderately easy hike with views of Pratt Mountain through a forest that is "re-wilding". It's a great way to experience this beautiful property, now protected as forever wild.

We are very grateful to Northeast Wilderness Trust for providing this hiking trail on their Binney Hill Preserve! We'll continue to partner with them for on going maintenance of the trail.

### Frank Robbins Trail



The Frank Robbins Trail was created as part of a partnership between Northeast Wilderness Trust and Friends of the Wapack. For more information or to donate please visit their websites:

[www.newwildernesstrust.org](http://www.newwildernesstrust.org) | [www.wapack.org](http://www.wapack.org)

