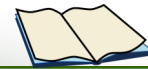


Spring / Summer 2015



Voice of the Wapack

Published by the Friends of the Wapack, Inc.

Issue #95

New Trail Guide, New Challenges

Last year was very busy for the Friends of the Wapack, with several major projects, including the restoration of the historic CCC picnic shelter at Miller State Park, and creation of the new Beebe Trail at Temple Mt. State Reservation. So what have we been up to since then?

All new Guide to the Wapack Trail!

We've spent the winter writing an entirely new Guide to the Wapack Trail. This new, full color guide book includes end-to-end descriptions of the Wapack Trail and eight side trails, suggested hikes with maps, and sections on geology and flora and fauna. A history section provides details on the history of the trail, the Wapack Lodge, the Friends, conservation properties, and the story of skiing along the Wapack Range. The guide includes our full color trail map. Proceeds from the sale help support our efforts to maintain and protect the Wapack Trail.

The Guide to the Wapack Trail by the Friends of the Wapack is available on line at our website Wapack.org. It can also be purchased at the Toadstool Bookshops, the Mountain Wanderer in Lincoln, NH, and at more locations to be added soon.

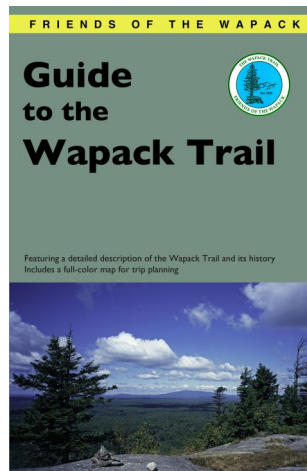
New Challenges

It was recently announced that the new preferred route for the Kinder-Morgan Tennessee Gas Pipeline Company's Northeast Energy Direct (NED)

natural gas pipeline project would take the 36 inch pipeline through several southern NH towns, impacting the Wapack Trail in three locations in New Ipswich where the trail crosses the Eversource power line at Windblown XC Ski Area and on the east side of Turnpike Rd. It would also impact the Kidder Mt. Trail where it connects to the Wapack Trail. A planned 80,000hp pipeline compressor station will likely be built in New Ipswich. The station could be 22 acres in size and block off 74 acres. It will be the largest station in the eastern U.S.

We have asked to meet with Kinder-Morgan to inform them of these trail crossings, to learn the impacts and to express our concerns. We are closely following developments. The Friends of the Wapack speak for the trail. Among our concerns are the possibility of permanent trail closure due to the pipeline or compressor station location, noise from the compressor station reaching the trail, and the impact to Windblown. Local news about the pipeline can be found at the Ledger-Transcript website at www.ledgertranscript.com/.

Another challenge provides an opportunity to protect one of the last large sections of the Wapack Trail that is on private land. A tract of about 485 acres is for sale in the area of Binney Hill Road in New Ipswich. About 1 mile of the Wapack Trail passes through the property. We've contacted the realtor, and learned that the hope is to sell to a buyer interested in open spaces and conservation. We are very interested in working with potential buyers to acquire a trail easement. A conservation easement could connect conserved land around Mt.



(Continued on page 3)

Friends of the Wapack



The *Voice of the Wapack* is published twice a year by the Friends of the Wapack, Inc. The Friends are nonprofit volun-

teers dedicated to the maintenance and preservation of the Wapack Trail System. Financial support is provided by member donations which are tax deductible to the extent allowed by law. The Wapack Trail is a 21-mile skyline footpath from Mt. Watatic in Ashburnham, MA to North Pack in Greenfield, NH. Completed in 1923, it is the oldest interstate hiking trail in the Northeast.

The Friends of the Wapack, Inc. is recognized as a charitable corporation under Section 501(c)(3) of the US IRS code.

Copyright © 2015 Friends of the Wapack, Inc.

Friends of the Wapack
P.O. Box 115

West Peterborough, NH 03468

Web: www.wapack.org

Email: info@wapack.org

Once it's gone, It's gone forever

Officers:

Rick Blanchette, *President*, (603) 878-1464

Dwight Horan, *V. President*, (603) 878-3779

Lee Baker, *Secretary*, (603) 525-5262

Bruce Myrick, *Treasurer*, (603) 352-8616

Standing Committee Chairs:

Lee Baker, *Trips*, (603) 525-5262

Rick Blanchette, *Trails*, (603) 878-1464

Mitch Call, *Ways & Means*, (603) 924-7544

Mike Przybyla, *Management / Right-of-Way*, (603) 878-3350

Directors:

Tom Brumaghim, (603) 878-6167

Ray Jackson, (978) 597-8813

Ollie Mutch, (978) 386-5318

Bob Saari, (603) 424-7453

Sherisa Sterling, (978) 827-3272

Archivist: Jeannette Baker

Trail Master: Mike Przybyla

Web Master/Newsletter: Rick Blanchette

Trail Work Days 2015

Once again the Friends of the Wapack will have a wide range of workdays this year. All workdays start at 8:30 AM. The Friends will supply tools. Make sure you wear the appropriate clothing for doing trail work such as work shoes and clothes you don't mind getting muddy.

Saturday May 16, 2015 - Windblown XC Ski Area

The first workday will be on May 16th and will concentrate on improving drainage along the section of the trail through the Windblown XC ski area. We will be installing water bars on the upper section of the trail on Barrett Mtn. If time permits we will do general trail maintenance and drainage work on the section south of Windblown. Meet at 8:30 AM at the Windblown Ski area parking lot.

Saturday September 26, 2015— Raymond Trail

The second workday will be on September 26 and will involve the construction of a bog bridge over a small stream on the Raymond Trail. A number of years ago we installed a log bridge of the the stream, but this has deteriorated and we will be installing a more permanent bridge. The Raymond Trail has limited parking, so we will park at the Cranberry Meadow Pond Trail located approximately a quarter mile north on East Mountain Road in Peterborough. We will be carrying in wood for the bridge, so make sure you wear gloves and have a pack that you don't mind carrying wood in.

Saturday October 17, 2015— New Ipswich to Sharon section

The final workday will be on October 17th and will concentrate on the section of the Wapack trail between Turnpike Road in New Ipswich and Nashua Road in Sharon. We haven't visited this section on a workday in quite a few years and will be doing general trail maintenance including drainage work, brush trimming, and blazing. Meet at the NewWest Mall on Turnpike Road in New Ipswich from which we will car pool over to the trailhead where there is limited parking.

Saturday July 18, 2015 - New Hampshire Trails Day, Temple Mt. State Reservation

The NH Department of Recreation and Economic Development (DRED) is working on plans to promote NH Trails Day state wide. We are still in the planning stages, but we hope to participate in NH Trails Day with a work day to install bog bridges and signs on the Beebe Trail at Temple Mountain State Reservation. Check our web site wapack.org for more information as it develops.

See you on the trail!

- Mike Przybyla, Trail Master

Friends of the Wapack Upcoming Events

All are welcome to attend the following meetings & events
Check our website for updates and additions www.wapack.org

Board Meetings

First Thursday of alternate months unless otherwise noted. (May 7, September 3, November 5). All are welcome. Shieling Forest Barn in Peterborough, NH, or Ashby Public Library, Ashby MA.. 7:00 PM. Check with a board member to confirm date and location.

Trail Work Days

See the "Trail Work Days 2015" article in this newsletter for details. Contact Mike Przybyla for more information or questions 603-878-3350. Please check our website for updates www.wapack.org.

Annual Meeting

Saturday, October 24 - 1:00 PM - Town Meeting House, Sharon, NH

The program for our annual meeting is being planned. Watch for a special mailing in the fall, or check our website for updates and details. www.wapack.org

Hikes

Saturday, September 5 - Annual Wapack Trail End to End Hike!

Hike the entire trail in one day! Group will meet at 6:00 AM at the trail head in Greenfield. Please call leader Tom Brumaghim to register and for details (603) 878-6167.

Notices

Hiking the Wapack Trail through Windblown Cross-Country Ski Area

Hiking through Windblown Cross Country ski area is only allowed on the marked route of the Wapack Trail, and no mountain bikes please. Parking is still along the shoulder of Route 123/124 Turnpike Road, between Wapack Road and the Windblown entrance, not on Windblown property.

The trail is closed through Windblown during Mud Season—roughly now through early May. Thank you!

Hiking the Wapack Trail during Mud Season

With mud on the surface and frost still rising below, April/May mud season is the time when the Wapack Trail is most susceptible to damage from hikers boots. Please consider staying off the wettest areas until the ground thaws and dries out.

Voice of the Wapack newsletter on line

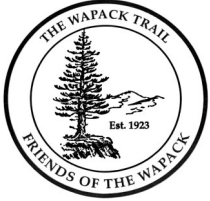
If you would rather read this newsletter on line, please sign up for our e-Newsletter at Wapack.org. Rather than receiving the paper newsletter you will receive our new e-Newsletter via email with a link to the full color version.

If your email address has changed please send us a note from your new address to info@wapack.org

New Trail Guide, new Challenges (cont.)


Watatic in Mass. with the Binney Pond Natural Area and the Wapack Wilderness conservation easement on Pratt and New Ipswich Mountains. This would result in the trail being protected and much of the land conserved from Watatic to Windblown. As we have with past opportunities, we are reaching out to conservation organizations to partner with to protect the trail.

Each year presents new challenges to the trail. We appreciate your support as this all volunteer organization continues to work to maintain and protect the trail. The "spring foliage" season is upon us. The greening of the forest landscape in spring may be the best balm to lift our collective spirits after a long winter- but only if we partake. Imbibe the season along the Wapack Trail. - Rick Blanchette, President



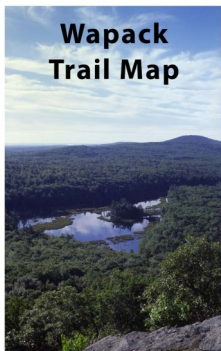
Friends of the Wapack, Inc.
 P.O. Box 115
 West Peterborough, NH 03468
 Info@wapack.org
 www.wapack.org




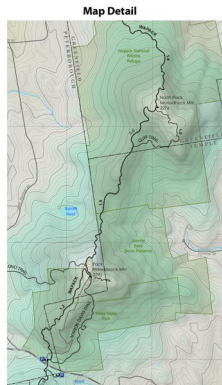
 Find us on Facebook

General Store

Visit our website Wapack.org to order the all new Guide to the Wapack Trail, Trail Map, our patch or sticker. Use PayPal or print the form and order via mail. Thanks for your support!



Friends of the Wapack 



Thank you to Lemonade.Net! Their generosity has made our website possible. Visit them at www.lemonade.net

Printed on Recycled Paper



Remembering Mary Jane Grasty



Mary Jane Grasty passed away February 8th, 2015, at the age of 91. Mary Jane had a passion for conservation. She was a member of the New Ipswich Planning Board, and a committee member for the Northeast Wilderness

Trust. She was on the board of the Hampshire Country School, was president of the NH State Association of Regional Planning Commissions, and helped found the Monadnock Conservancy in 1989. Mary Jane was instrumental in several efforts to protect the Wapack Trail. In 1995, as a trustee of Hampshire Country School, she facilitated a right of first refusal trail easement for over one mile of the Wapack on the school property, and in 2008 worked on the successful Wapack Wilderness Northeast Wilderness Trust conservation easement, protecting 1,400 acres of the school property along the Wapack Trail corridor. In 1997, she assisted the Friends of the Wapack and the New England Forestry Foundation (NEFF) in the effort to establish a permanent trail easement for the Wapack Trail under the New Hampshire Municipal Trails Act. The trail easement is held by the towns of Sharon and Temple, and protects public access to the trail along the southern end of the Temple Mountain ridgeline.

Memorial contributions in Mary Jane's name can be made to the Northeast Wilderness Trust (newildernesstrust.org). The Friends of the Wapack have sent a contribution in gratitude for all that Mary Jane has done for the Wapack Trail.