

Fall / Winter 2014



Voice of the Wapack

Published by the Friends of the Wapack, Inc.

Issue #94

CCC Shelter Restoration Project Photos



Shelter, Trail and View—three great projects completed!



Restoring the CCC Shelter at Miller State park

The Friends of the Wapack have completed the restoration of the historic CCC Picnic Shelter at Miller State Park! The shelter was built in the 1930's by the Civilian Conservation Corps. (CCC). It took 4 days and a great amount of work from nine members of our trail crew. The shelter looks great now - back to what it looked like 80 years ago - perhaps stronger as we used a 4x6 instead of a 4x4 for the front beam, and we reinforced the top masonry with concrete in the center and embedded heavy chains that anchor down the center beam. We used rough cut lumber from Wilkins Lumber to match the original construction. Please visit our facebook page for more photos!

The Beebe Trail!

On National Trails Day, June

7, our Trail Crew cut a new base to summit trail at Temple Mt. State Reservation. It is named the Beebe Trail, in honor of Charlie and Lucie Beebe, who founded the former Temple Mt. Ski Area on this property in 1937. The Beebe family also maintained the Wapack Trail along the Temple Mt. Ridge for many years.

The new trail connects to the Wapack Trail at the base and summit, providing a nice loop hike through the Reservation. The trail runs to the East side of the property, crossing several former ski trails and following some of the former cross-country ski trails, with a new section to avoid a steep drop. It has a great view at the top, and passes several remnants of the old ski area. Our trail crew will maintain this trail as part of the Wapack Trail

(Continued on page 4)

Friends of the Wapack



The *Voice of the Wapack* is published twice a year by the Friends of the Wapack, Inc. The Friends are nonprofit volun-

teers dedicated to the maintenance and preservation of the Wapack Trail System. Financial support is provided by member donations which are tax deductible to the extent allowed by law. The Wapack Trail is a 21-mile skyline footpath from Mt. Watatic in Ashburnham, MA to North Pack in Greenfield, NH. Completed in 1923, it is the oldest interstate hiking trail in the Northeast.

The Friends of the Wapack, Inc. is recognized as a charitable corporation under Section 501(c)(3) of the US IRS code.

Copyright © 2014 Friends of the Wapack, Inc.

Friends of the Wapack

P.O. Box 115

West Peterborough, NH 03468

Web: www.wapack.org

Email: info@wapack.org

Once it's gone, It's gone forever

Officers:

Rick Blanchette, *President*, (603) 878-1464

Dwight Horan, *V. President*, (603) 878-3779

Lee Baker, *Secretary*, (603) 525-5262

Bruce Myrick, *Treasurer*, (603) 352-8616

Standing Committee Chairs:

Lee Baker, *Trips*, (603) 525-5262

Rick Blanchette, *Trails*, (603) 878-1464

Mitch Call, *Ways & Means*, (603) 924-7544

Mike Przybyla, *Management / Right-of-Way*, (603) 878-3350

Directors:

Tom Brumaghim, (603) 878-6167

Ray Jackson, (978) 597-8813

Ollie Mutch, (978) 386-5318

Bob Saari, (603) 424-7453

Sherisa Sterling, (978) 827-3272

Archivist: Jeannette Baker

Trail Master: Mike Przybyla

Web Master/Newsletter: Rick Blanchette

President's Letter



First I would like to thank all of our trail workers who helped with the three key projects described in the feature article. Also special thanks to Bob Saari for leading the shelter restoration project, Mike Przybyla for help with the layout of the new

Beebe Trail, to NH DRED forester Will Guinn for inspecting the new trail route and approving the project, to our sign maker Don Ray for making all the signs, and to Bart Hunter for his help getting all the heavy signposts and signs up the mountain! The shelter and Beebe trail projects would not have been possible without the support and advocacy of Patrick Hummel, the new Volunteer Program Coordinator at NH State Parks. And thanks to Joanne Glode, Stewardship Ecologist, NH Nature Conservancy, for supporting and helping with the trail extension to a great outlook on the Joanne Bass Bross Preserve.

Please join us for our annual meeting on October 25. Francie Von Mertens will present "Invasive Plants in the Monadnock Region." You may discover that you have invasives in your own backyard! See the flyer included with this newsletter for details. After Francie's talk, I will provide a photo review of our three major projects for 2014.



View from the Beebe Trail

In other news, we have signed an updated Memorandum of Understanding with the US Fish and Wildlife Service for maintenance of the Wapack and Cliff Trails in the Wapack National Wildlife Refuge. We are also working with Patrick Hummel on a Volunteer Group agreement with DRED to formalize our trail maintenance in Miller State Park, Temple Mt. State Reservation, and Binney Pond Natural Area. We've received great feedback on new e-newsletter. You can

sign up for it at Wapack.org or our facebook page. And we continue work on our Wapack Forever initiative to strengthen our efforts to protect the trails. There is still much to do. Thank you all for your support!

- Rick Blanchette, President



Friends of the Wapack Upcoming Events

All are welcome to attend the following meetings & events
Check our website for updates and additions www.wapack.org

Board Meetings - First Thursday of alternate months unless otherwise noted. (November 6, January 8, March 5). All are welcome. Shieling Forest Barn in Peterborough, NH, or Ashby Public Library, Ashby MA.. 7:00 PM. Check with a board member to confirm date and location.

Trail Work Days

Saturday October 18, 2014 - Temple Mountain State Reservation

The final workday of 2014 will be on the Wapack Trail between Temple Mountain and Holt Peak. This section is seeing increasing use since the opening of the Temple Mountain Reservation. There has been significant brush growth along this section. We will be clearing brush and reblazing this section. There are also a few water bars that need cleaning and general maintenance. This workday will be a good opportunity of newer trail adopters to see how brush should be cut along the trail and to learn general trail maintenance.

We'll meet at 8:30 AM at the Temple Mountain State Reservation parking lot on Route 101 in Peterborough, NH opposite Miller State Park. Bring a lunch and water. Contact Mike Przybyla for details or questions 603-878-3350. Check our website for updates www.wapack.org.

Annual Meeting

Saturday, October 25 - 1:00 PM - Town Meeting House, Sharon, NH

Join us for a fascinating and informative presentation by Francie Von Mertens on the effects of invasive plants on natural communities in our region, identifying invasive plants, and steps you can take. Everyone is welcome!

See the annual meeting flyer included with this newsletter for details or check our web site www.wapack.org

Hikes

Saturday, October 25 - 9:00 AM — Temple Mt. State Reservation Beebe Trail.

Join us on a morning loop hike through the former Temple Mt. Ski Area on the Wapack Trail and the new Beebe Trail! Meet at the Temple Mt. State Reservation parking lot on Route 101 in Peterborough, NH at 9:00AM. For details contact Lee Baker (603) 525-5262 or email Info@wapack.org . Updates at www.wapack.org.

Notices

Winter use of the Wapack Trail through Windblown Cross-Country Ski Area

1. With snow on the ground everyone using the Wapack Trail through Windblown property needs to pay for a trail ticket.
 2. Everyone must use skis or snowshoes, no hiking.
 3. In winter with a trail ticket you can use the Windblown parking lot during the day, not overnight.
 4. Dogs are not permitted.
 5. Check the Windblown website to see if they are open or stop into the ski shop between 9 and 5. If not open no trail fee.
 6. Snowshoers need to stay out of the ski tracks.
 7. People coming from south to north and not leaving a car in our lot can pay on their way out.
- Thank you!

Voice of the Wapack newsletter on line

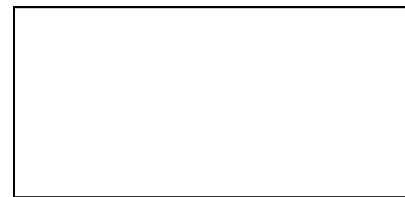
If you would rather read this newsletter on line, please sign up for our e-Newsletter at Wapack.org. Rather than receiving the paper newsletter you will receive our new e-Newsletter via email with a link to the full color version.

If your email address has changed please send us a note from your new address to info@wapack.org

External Frame Back Pack(s) needed. Anyone that no longer has a use for one and would like to know it is going back on the trails... please contact Bob Saari at nhhikerbob@gmail.com, or 603-424-7453.



Friends of the Wapack, Inc.
P.O. Box 115
West Peterborough, NH 03468
Info@wapack.org
www.wapack.org

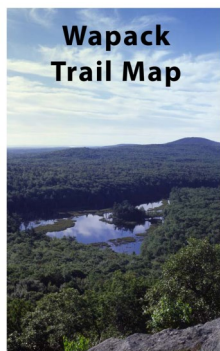


Find us on Facebook

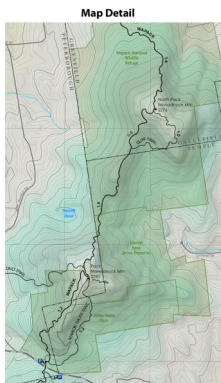
**Annual Meeting
Notice enclosed!!**

General Store

Visit our website Wapack.org to order the Wapack Trail Guide, Trail Map, Friends of the Wapack cap, our patch or sticker. Use PayPal or print the form and order via mail. Thanks for your support!



Friends of the Wapack



Thank you to Lemonade.Net! Their generosity has made our website possible. Visit them at www.lemonade.net

Printed on Recycled Paper



(continued from page 1)



The Wapack Trail Crew that cut the Beebe Trail, June 7, 2014

at the East side of the summit parking area. On our May 3rd work-day we cut and marked an extension trail from the Knoll at the former end of the trail. Check it out on your next trip to Miller SP. It's a short half mile round trip hike from the summit to the outlook. On May 3 we also cleared brush to enhance the Park's Boston View and cleared fallen trees on the Wapack Trail.

Check our facebook page for photos!

System going forward. Thanks to Don Ray for making all the signs!

Spruce Knoll Spur Trail extended to view

The Spruce Knoll Spur Trail on the Joanne Bass Bross Nature Conservancy Preserve has been extended to a great outlook. The trail is accessed from Miller State Park's Boston View outlook at the summit of Pack Monadnock



The Wapack Trail Crew that cut the trail extension and more on May 3, 2014