



Friends of the Wapack  
P.O. Box 115  
West Peterborough, NH  
03468  
[www.Wapack.org](http://www.Wapack.org)

## Another “Mile” Stone for the Wapack Trail!



*Collaborative efforts by Friends of the Wapack, Northeast Wilderness Trust and the Town of New Ipswich resulted in successfully protecting 488 acres and one mile of the Wapack Trail!*



Viewing the Binney Hill Preserve from Pratt Mountain. Photo by Diane Wright.

Over the past two years, Friends of the Wapack collaborated with Northeast Wilderness Trust (NWT) to successfully protect a mile of the Wapack Trail, through NWT's new Binney Hill Preserve property. Friends of the Wapack, together with the Town of New Ipswich, worked with NWT in an effort that both protects 488 acres as forever wild and insures a perpetual right of the general public to access the Wapack Trail across the property.

The Binney Hill Preserve was one of the last large unprotected properties along the Wapack Range. Protection of this land protects sensitive shoreline along Binney Pond, which is one of the most wild and beautiful places along the Wapack Range. The preserve abuts the Binney Pond Natural area to the north and Ashburnham State Forest and the protected areas surrounding Mount Watatic to the south. This effort also insures the continuity of the Wapack Trail through this

property for future generations.

In 2015, then NWT Executive Director, Daryl Burtnett, who had previously worked with the Friends of the Wapack on a nearby project known as Wapack Wilderness on Pratt Mountain, received a flurry of calls and emails asking if the Trust had any interest in facilitating the conservation of the land.

“It was a pretty daunting task,” said Burtnett. “We had to raise a little less than a million dollars.”

To be precise, about \$920,000 – \$25,000 of which was contributed by Friends of the Wapack.

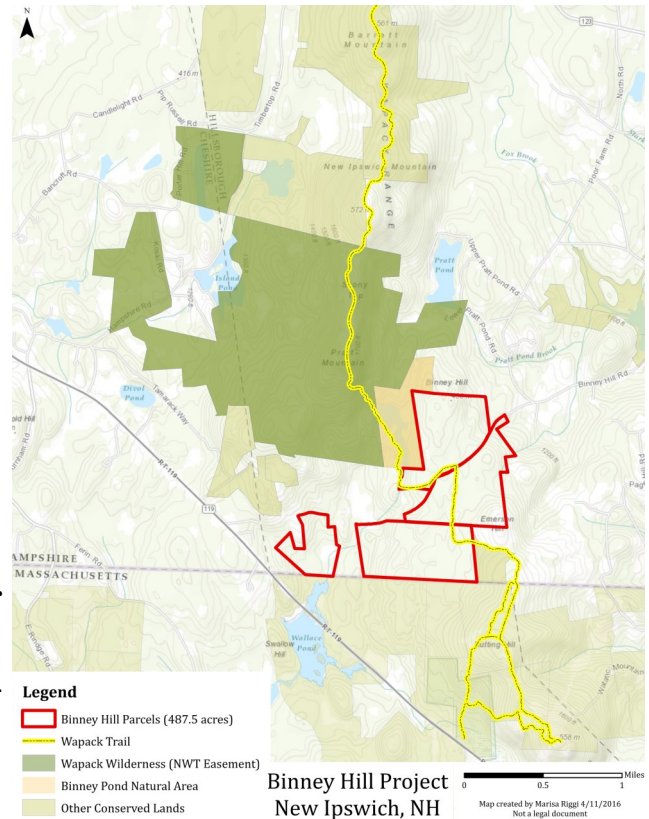


The Wapack Trail through the Binney Hill Preserve. Photo by Shelby Perry, Northeast Wilderness Trust.

The trail protection and conservation goals were accomplished first by NWT purchasing the property, and second by establishing the Binney Hill Declaration of Charitable Trust. This is a recorded contract attached to the property deed, which assures hikers the Wapack Trail remains open for their enjoyment, as well as permitting Friends of the Wapack to continue maintaining the beautiful and historic Wapack Trail. It also insures that the property will be held as a forever wild preserve. The Town of New Ipswich holds an Executory Interest in the Trust.

Friends of the Wapack were assisted in establishing the trail protection terms and conditions of the Binney Hill Declaration of Charitable Trust by Attorney Thomas N. Masland, from Concord, NH. Tom is considered one of the foremost land conservation attorneys in New Hampshire, representing both landowners and conservation organizations in land protection projects and conservation transactions.

Friends of the Wapack is very proud of this collaboration and it would not be possible without your donations. Over the years, your donations have helped us protect the Wapack Trail on the south Temple Mountain ridge, at Temple Mt. State Reservation, on Pratt and New Ipswich Mountains, on Mt. Watatic, and now on the Binney Hill Preserve. There are still miles of the trail to protect. Please donate to Friends of the Wapack so we can continue to work toward our goal of permanent legal access for hikers to the entire length of the Wapack Trail. Please consider making a donation today! Use the form below or donate via PayPal on our website [Wapack.org](http://Wapack.org). Thank you!



### 2018 Wapack Trail Protection Fund Appeal

Name \_\_\_\_\_

Address \_\_\_\_\_

Telephone \_\_\_\_\_ Email Address \_\_\_\_\_

Friends of the Wapack, Inc. (FOW) is an all-volunteer organization, recognized as a charitable corporation under Section 501(c)(3) of the IRS code. FOW is dedicated to the care and maintenance of the Wapack Trail system, and to securing permanent, legal rights for the general public to traverse the Trail's historic corridor. FOW encourages and fosters mutual courtesy, friendship and cooperation between hikers and landowners.

**Suggested donations:** \$25.00\_\_Trail Scout; \$50.00\_\_Trail Steward; \$100.00\_\_Trail Protector; \$250.00\_\_Trail Guardian; \$500.00\_\_Trail Angel; \$\_\_\_\_Other

*Once it's gone, it's gone forever!*

**Please mail your donation to Friends of the Wapack, P.O. Box 115, West Peterborough, NH 03068**

**Or donate on line at [Wapack.org](http://Wapack.org)**